



# H3380

## Dual-mode 5G vehicle-mounted integrated gateway



5G Cat. 16



4G LTE



3G UMTS



450 MHz



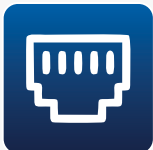
WLAN (optional)



GPS Glonass (optional)



up to 6x SMA (2x MIMO)



2 Ethernet Switch (optional 4)



USB 2.0



RS-232



RS-485



Dual-SIM



2in/2out



Audio (optional)

### Features

• Support 5G Sub6, 5GLAN, RedCap<sup>®</sup>

• Support 6xRS-485, 2xRS-232, 1xUSB

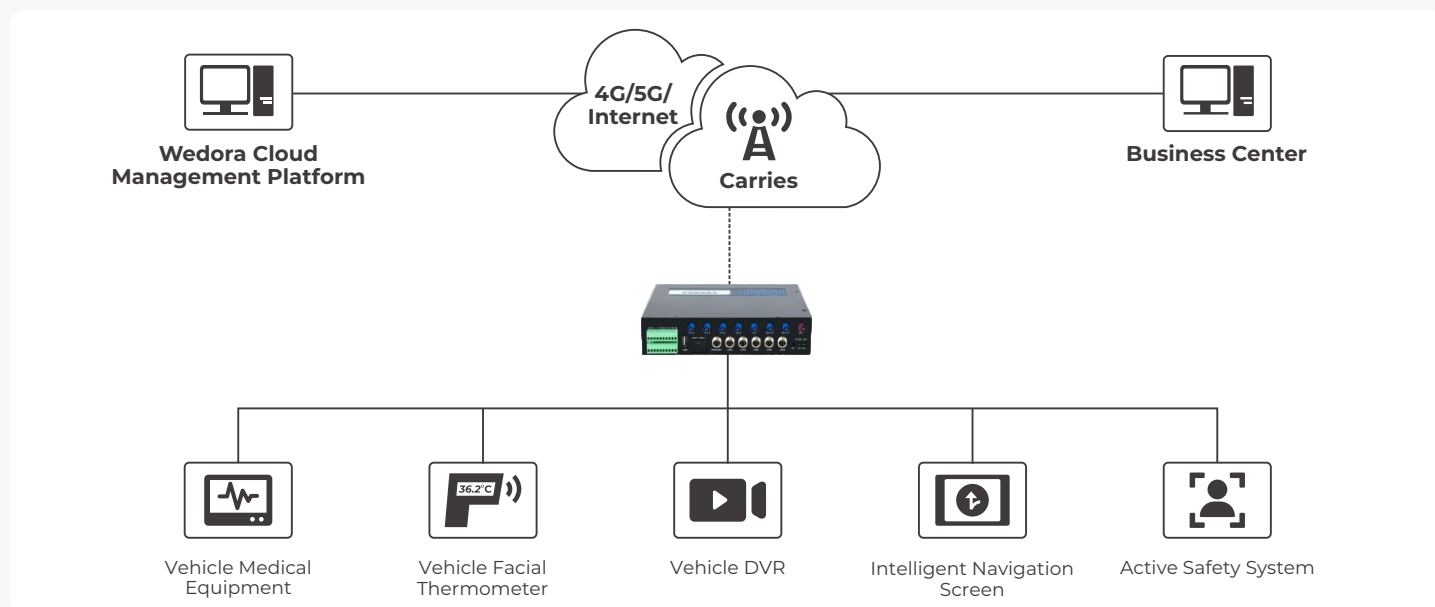
• Support Modbus TCP/RTU, MQTT and other mainstream communication protocols

• Support OPC, DLT645, DNP3.0 mainstream industrial protocols<sup>®</sup>

• Industrial grade standard design

• Widely used in vehicles and industrial sites

## Topology Diagram



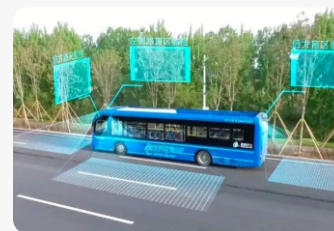
5G Smart Ambulance



5G Smart Environmental Sanitation Vehicle



5G Smart Logistics Vehicle



5G Smart Bus

## Application Business

### Advanced Dialing Capabilities

- Supports 5G Sub6, 5G LAN, and RedCap
- Supports 5G Multi-DNN Dialing and Network Slicing
- Supports 5G LAN and URLLC (Ultra-Reliable Low-Latency Communication)
- Enables Dual-Mode 5G for simultaneous transmission and reception or hot standby

### Protocol Support

- Compatible with mainstream communication protocols such as Modbus TCP/RTU and MQTT
- Supports industrial protocols including OPC, DLT645, and DNP3.0
- Fully compatible with PLC brands such as Siemens, Omron, Panasonic, and Mitsubishi

### VPN Features

- Supports VPN protocols including L2TP, PPTP, GRE, IPsec, and OpenVPN

### Security Management

- NAT Firewall support
- Secure login with SSH
- Advanced filtering for IP, MAC, domain names, and ports

### Remote Management

- Unified device management through Wedora Cloud
- Camera business management via the iScan Platform

### Penetration Management

- Supports remote lower-level device penetration management through Wedora Cloud
- Enables unified networking without IT intervention for VPN setup via Wedora Cloud
- Provides cloud-based PLC automatic networking functionality through Wedora Cloud

# Specification

<b>Product model</b>	H3380
<b>Network format</b>	5G+4G Dual Mode or Dual 5G Hot Standby
<b>Module embedded</b>	Default: Quectel RM500U-EA (M.2), Optional: RM520N (M.2) / EG912N-EN / EC2x / EG2x (mPCIe)
<b>Interface</b>	
<b>Antenna</b>	FAKRA D-coded male
<b>SIM Card Slots</b>	2×SIM Card Slots (supports 1.8V/3.0V)
<b>Ethernet Ports</b>	LAN Ports: 5×10/100/1000 Mbps auto-negotiation WAN/LAN: 1×10/100/1000 Mbps auto-negotiation
<b>USB Port</b>	1×USB2.0 (for data storage or Wi-Fi extension)
<b>20-Pin Terminal</b>	RS485: 6 ports (configurable, 300–115200 bps) RS232: 2 ports (configurable, 300–115200 bps) CAN Interface: 1 port (customized model)
<b>Button</b>	1 RESET button (press and hold for more than 5 seconds to restore factory settings)
<b>Storage</b>	TF Card Slot (customized model)
<b>WLAN</b>	2.4 GHz optional
<b>GNSS</b>	optional with RM520N 5G-module or additional mPCIe LTE module
<b>internal mPCIe slot</b>	for additional LTE or 450MHz-module
<b>Mobile Network Support</b>	
<b>Supported Networks</b>	UMTS Bands: B1, B2, B5, B8 LTE Bands: B1/2/3/4/5/7/8/20/28 <b>5G Bands:</b> 5G NR NSA: n1/3/7/28/38/40/41/77/78 5G NR SA: n1/3/5/7/8/20/28/38/40/41/66/71*/77/78 <b>MIMO Support</b> DL 4x4 MIMO: n1/3/7/28/38/40/41/66/77/78 UL 2x2 MIMO: n38/40/41/77/78 DL 2x2 MIMO: n5/8/20/71*
<b>Transmission Rates</b>	5G Maximum Rates: ≤2 Gbps (DL) / ≤1 Gbps (UL)
<b>Power Supply</b>	
<b>Operating voltage</b>	+9V~+48V DC (with reverse polarity protection)
<b>Power Consumption</b>	
<b>Idle State</b>	Approx. 600 mA @ 12V DC (no data transmission)
<b>Maximum</b>	Approx. 1200 mA @ 12V DC
<b>Typical</b>	Approx. 900 mA @ 12V DC (data transmission)
<b>Additional Features</b>	
<b>Weight</b>	About 900g (Single mode)
<b>Dimensions</b>	220.0×142.0×47.0mm (excluding power, antenna connectors, and brackets)
<b>Operating temperature</b>	-30°C~+75°C
<b>Storage temperature</b>	-40°C~+85°C
<b>Relative humidity</b>	< 95% (no condensation)
<b>Protection class</b>	IP20
<b>Operating System</b>	OpenWRT 24 (fully programmable and configurable embedded Linux system)
<b>Electromagnetic Compatibility</b>	Conforms to EMC Directive 2014/30/EU (CE marking), Optional: ECE R10
<b>Security</b>	TPM 2.0, Secure Boot, Watchdog, Development complies with IEC 62443-4.1

# Appearance

